



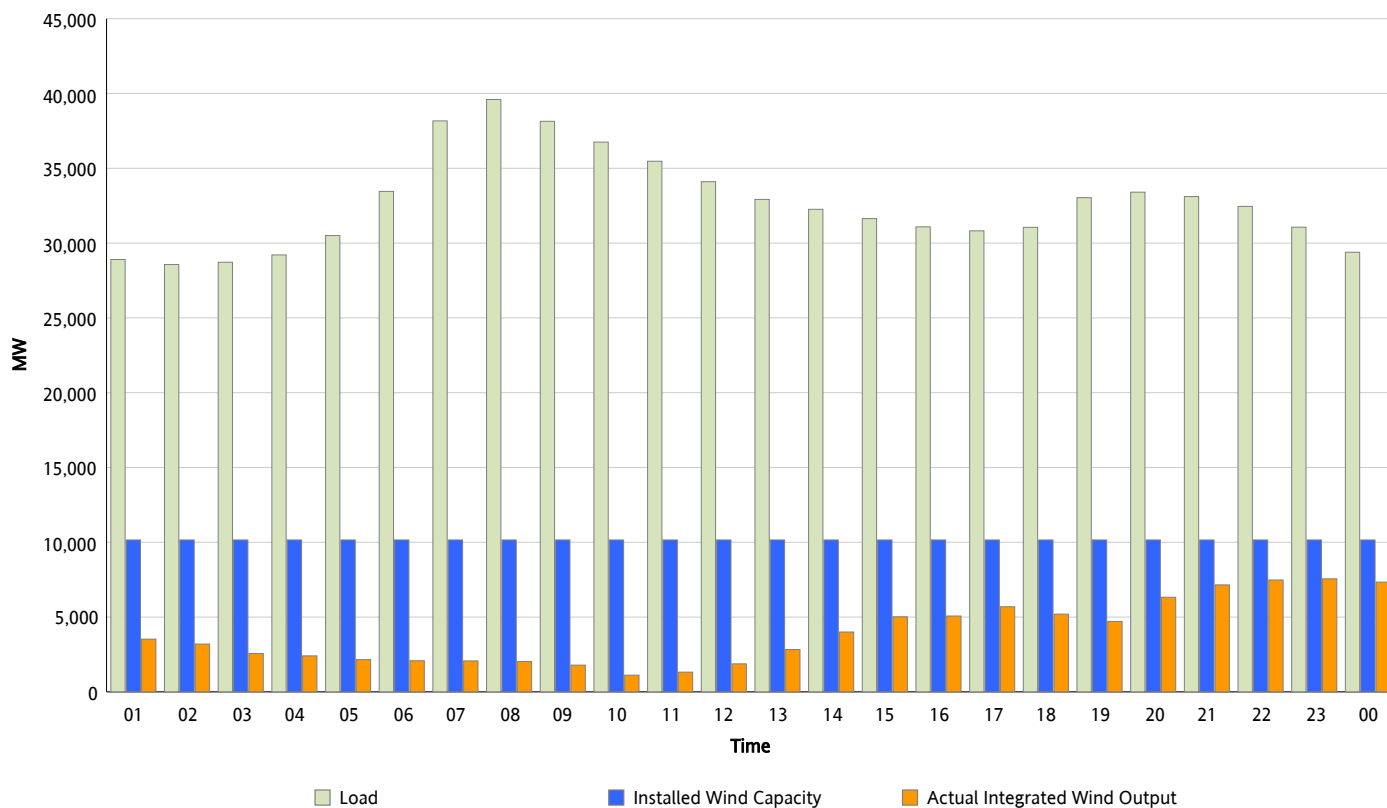
## ERCOT Grid Operations

### Wind Integration Report : 02/01/2013

Peak Load	39,596 MW
Load Peak Hour (HE)	08
Wind Over Peak	2,026 MW
Wind Record 01/29/13	8,667 MW
Max Wind Value*	7,628 MW
Wind Peak Time	22:09
Wind Integration %	24.09 %

#### Hourly Average Actual Load vs. Actual Wind Output

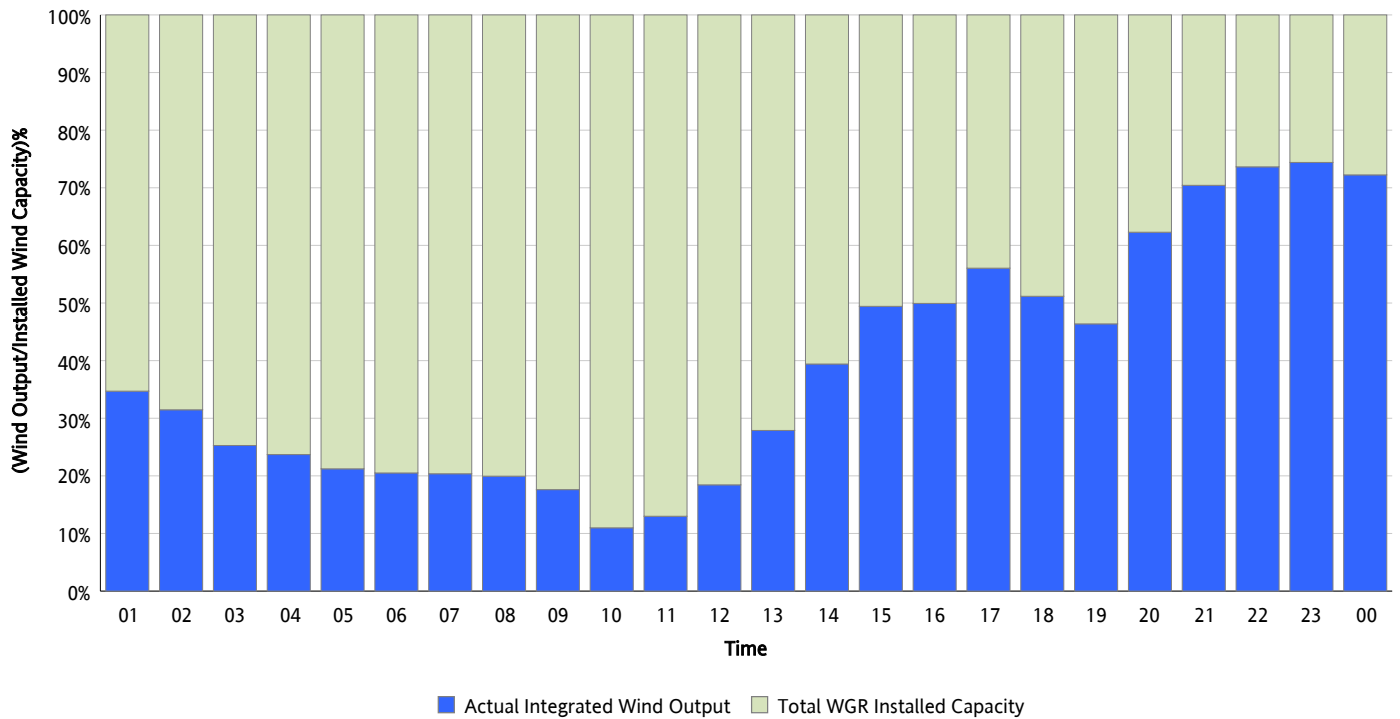
02/01/2013



\* Wind Record and Wind Max represent instantaneous values and the rest of the values are integrated over the hour

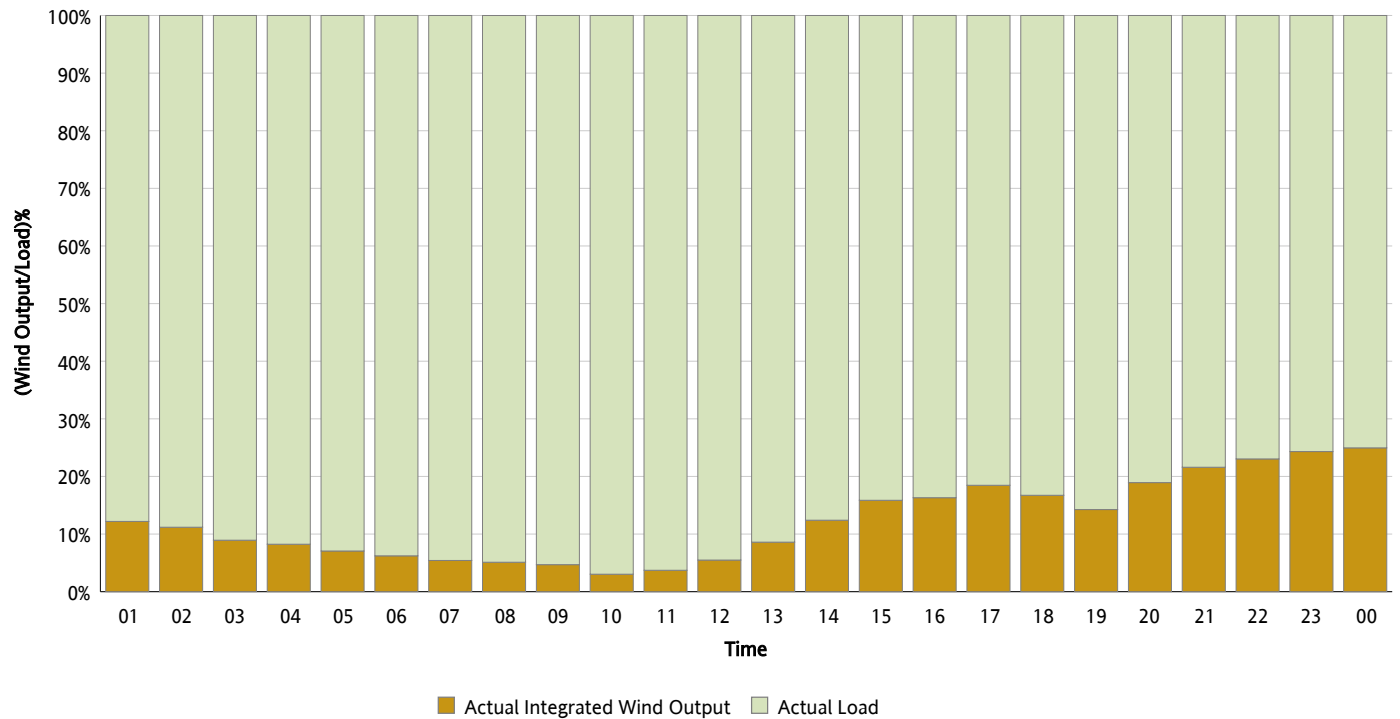
## Actual Wind Output as a Percentage of the Total Installed Wind Capacity

02/01/2013



## Actual Wind Output as a Percentage of the ERCOT Load

02/01/2013



## ERCOT Load vs. Actual Wind Output

01/25/2013 - 02/01/2013

